

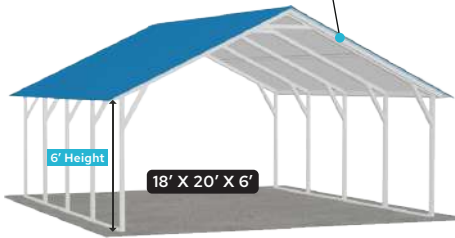


QUALITY IS OUR FIRST PRIORITY

STANDARD CERTIFIED 115/30

12' to 24' Wide - Up To 16' Height - Any Length

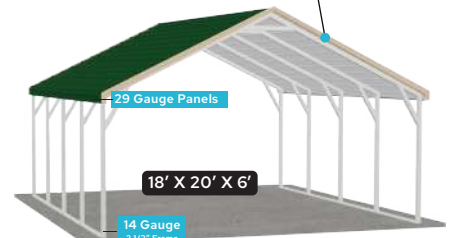
VERTICAL



BOXED EAVE



REGULAR



Standard Heights 6'-16'

12x20	18x20	20x20	22x20	24x20
\$2,195	\$2,295	\$2,595	\$2,995	\$3,395
12x25	18x25	20x25	22x25	24x25
\$2,695	\$2,795	\$3,295	\$3,695	\$4,195
12x30	18x30	20x30	22x30	24x30
\$3,195	\$3,395	\$3,995	\$4,495	\$4,995
12x35	18x35	20x35	22x35	24x35
\$3,795	\$3,995	\$4,595	\$5,195	\$5,895
12x40	18x40	20x40	22x40	24x40
\$4,295	\$4,595	\$5,295	\$5,995	\$6,695
12x45	18x45	20x45	22x45	24x45
\$4,890	\$5,090	\$5,890	\$6,690	\$7,590
12x50	18x50	20x50	22x50	24x50
\$5,390	\$5,590	\$6,590	\$7,390	\$8,390

Standard Heights 6'-16'

12x20	18x20	20x20	22x20	24x20
\$1,795	\$1,895	\$2,395	\$2,595	\$2,995
12x25	18x25	20x25	22x25	24x25
\$2,195	\$2,395	\$2,995	\$3,295	\$3,695
12x30	18x30	20x30	22x30	24x30
\$2,695	\$2,895	\$3,595	\$3,995	\$4,495
12x35	18x35	20x35	22x35	24x35
\$3,095	\$3,395	\$4,195	\$4,595	\$5,195

Standard Heights 6'-16'

12x20	18x20	20x20	22x20	24x20
\$1,695	\$1,795	\$2,195	\$2,495	\$2,895
12x25	18x25	20x25	22x25	24x25
\$2,095	\$2,195	\$2,695	\$3,095	\$3,595
12x30	18x30	20x30	22x30	24x30
\$2,595	\$2,695	\$3,195	\$3,795	\$4,295
12x35	18x35	20x35	22x35	24x35
\$2,995	\$3,095	\$3,795	\$4,395	\$4,995

☞ Roof Length is 1ft. Longer Than Frame Length

☞ 1 Year Workmanship Warranty (Limited)

☞ 10 Year Warranty on 14ga. 2 1/2" Framing

☞ 20 Year Limited Rust Through Warranty on:

- Panels for Vertical Roofs Up To Any Length
- Regular and Boxed Eaves Up To 31'
- Framing 12ga. 2 1/4"

15' - 16' Height Requires A Telescopic Forklift

All Buildings Include



29 Gauge Roofing



Anchors Included



4' Braces On Every Leg
8' or Taller



4' Centers or Less

Upgrade Available 12G 115/50



Wind load



Snow load

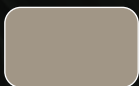
Buildings Over 35 feet long must be vertical roof style

Land Must Be Level Prior To The Installation Of The Building!

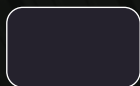
Available Colors :



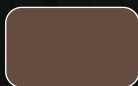
White



Clay



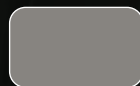
Black



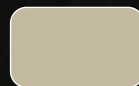
Earth Brown



Tan



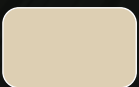
Pewter Grey



Sandstone



Barn Red



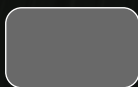
Pebble Begie



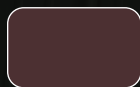
Slate Blue



Evergreen



Quaker Grey



Vintage Burgundy



King Blue

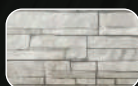


Cardinal Red

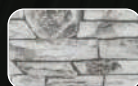


True Burgundy

Premium Colors :



Dark Stone



Light Rock



Copper

Please note that the colors may vary due to the printing process.



www.warriorbuildings.com



980-580-4899



info@warriorbuildings.com



QUALITY IS OUR FIRST PRIORITY

STANDARD CERTIFIED 115/30

Options, Accessories And Extras

OPTIONS	20' LONG	25' LONG	30' LONG	35' LONG	40' LONG
12G 115/50	\$360	\$480	\$600	\$720	\$840
J-Trim	\$60	\$70	\$85	\$95	\$110

HEIGHT	20' LONG	25' LONG	30' LONG	35' LONG	40' LONG
7' Tall	\$110	\$130	\$155	\$180	\$205
8' Tall	\$215	\$265	\$310	\$360	\$410
9' Tall	\$325	\$395	\$470	\$540	\$610
10' Tall	\$430	\$530	\$625	\$720	\$815
11' Tall	\$540	\$660	\$780	\$900	\$1,020
12' Tall	\$840	\$995	\$1,140	\$1,295	\$1,440
13' Tall	\$1,190	\$1,370	\$1,775	\$1,955	\$2,245
14' Tall	\$1,295	\$1,500	\$1,930	\$2,135	\$2,450
15' Tall	\$1,920	\$2,280	\$2,640	\$3,120	\$3,600
16' Tall	\$2,160	\$2,520	\$2,880	\$3,360	\$3,840

- Single Leg, Single Base Rail, Reinforced.
- Double Leg, Double Base Rail.

UNCERTIFIED			CERTIFIED		
\$500	6' x 6'	\$750	\$600	6' x 6'	\$850
\$600	8' x 8'	\$800	\$700	8' x 8'	\$900
\$650	9' x 8'	\$850	\$750	9' x 8'	\$950
\$700	10' x 8'	\$950	\$800	10' x 8'	\$1,050
\$800	10' x 10'	\$1,050	\$900	10' x 10'	\$1,150
\$1,400	12' x 12'	\$1,900	\$1,500	12' x 12'	\$2,000
\$2,100	14' x 14'	\$2,500	\$2,200	14' x 14'	Coming Soon
\$2,500	16' x 16'	\$2,700	\$2,600	16' x 16'	Coming Soon

White Only	Pewter Grey	Evergreen
	Earth Brown	Barn Red
	Pebble Begie	

Building must be 2' taller than the garage door when installed on the side.

Chain Hoist Included In Price

HEIGHT	20' LONG	25' LONG	30' LONG	35' LONG	40' LONG
6' Tall	\$440	\$520	\$620	\$700	\$860
7' Tall	\$550	\$650	\$775	\$875	\$1,075
8'-9' Tall	\$660	\$780	\$930	\$1,050	\$1,290
10' Tall	\$770	\$910	\$1,085	\$1,225	\$1,505
11'-12' Tall	\$880	\$1,040	\$1,240	\$1,400	\$1,720
13' Tall	\$990	\$1,170	\$1,395	\$1,575	\$1,935
14'-15' Tall	\$1,100	\$1,300	\$1,550	\$1,750	\$2,150
16' Tall	\$1,210	\$1,430	\$1,705	\$1,925	\$2,365
VERTICAL SIDES (BOTH SIDES)	20' LONG	25' LONG	30' LONG	35' LONG	40' LONG
6'-10' Tall Add	\$360	\$420	\$480	\$540	\$600
11'-15' Tall Add	\$480	\$570	\$660	\$750	\$840
16' Tall Add	\$600	\$720	\$840	\$960	\$1,080
VERTICAL TWO TONE (BOTH SIDES)	\$300	\$350	\$400	\$450	\$500

HEIGHT	12' WIDE	18' WIDE	20' WIDE	22' WIDE	24' WIDE
6' Tall	\$610	\$780	\$950	\$1,110	\$1,280
7' Tall	\$685	\$860	\$1,030	\$1,205	\$1,380
8'-9' Tall	\$790	\$985	\$1,170	\$1,355	\$1,540
10' Tall	\$900	\$1,100	\$1,290	\$1,490	\$1,710
11'-12' Tall	\$1,115	\$1,325	\$1,535	\$1,745	\$1,955
13' Tall	\$1,225	\$1,440	\$1,655	\$1,870	\$2,090
14'-15' Tall	\$1,405	\$1,670	\$1,925	\$2,185	\$2,440
16' Tall	\$1,510	\$1,795	\$2,075	\$2,360	\$2,640
VERTICAL END (PER END)	\$150	\$270	\$300	\$330	\$360
VERTICAL TWO TONE (PER END)	\$200	\$250	\$300	\$350	\$400

Chain Hoist	
\$325.00 Each	

Frameouts	
45° Angle (Plus Frameout Charge)	\$85
Garage Door	\$150
Window	\$75
Walk-In Door	\$90

End Openings	
Without Garage Door	\$150

Insulation	
Double Bubble	\$1.50/sqft
Woven R-17	\$3.00/sqft

Gable End	
Certified	\$225
Vertical Gable Add	\$50

Colored Screws	
Add 3% of Retail Cost of Building	

Connection Fees	Side to Side	21' Long	Start at \$100
Add \$25 For Each Additional 5' in Length			

Side Openings (With Garage Door)	
6'-10' Wide	\$150
12' Wide	\$200
14' Wide	\$250
16' Wide	\$300

Side Openings (Without Garage Door)	
6'-10' Wide	\$250
12' Wide	\$300
14' Wide	\$350
16' Wide	\$400
18' Wide	\$450
20' Wide	\$500

Windows	
\$200 30" x 30"	\$225 30" x 36"

1/2 Panel w/Trim	
21' Long	\$220
26' Long	\$260
31' Long	\$310
36' Long	\$350

Cut Panel	
21' Long	\$50
26' Long	\$60
31' Long	\$70
36' Long	\$80

Panels 3'	
21' Long	\$110
26' Long	\$130
31' Long	\$155
36' Long	\$175

Walk-In Doors	
\$300 36" x 80"	

For all Northern States.

Check your area for restrictions.

Prices subject to change without notice.



www.warriorbuildings.com



980-580-4899



info@warriorbuildings.com

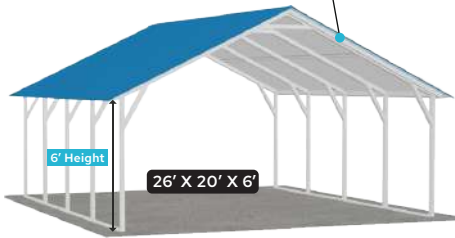


QUALITY IS OUR FIRST PRIORITY

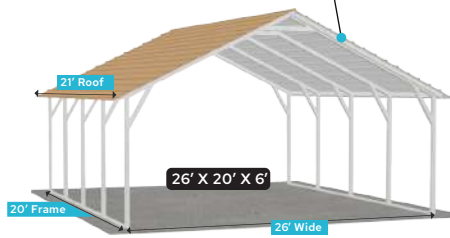
TRIPLE WIDE CERTIFIED 115/30

26' to 30' Wide - Up To 16' Height - Any Length

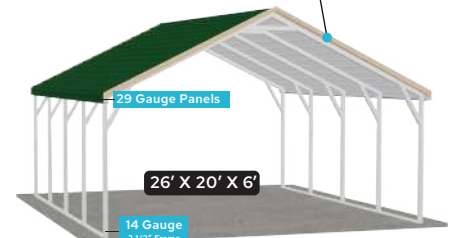
VERTICAL



BOXED EAVE



REGULAR



Standard Heights 6'-16'

26x20	28x20	30x20
\$3,495	\$3,595	\$3,695
26x25	28x25	30x25
\$4,295	\$4,495	\$4,595
26x30	28x30	30x30
\$5,195	\$5,395	\$5,595
26x35	28x35	30x35
\$6,095	\$6,295	\$6,495
26x40	28x40	30x40
\$6,995	\$7,195	\$7,395
26x45	28x45	30x45
\$7,790	\$8,090	\$8,290
26x50	28x50	30x50
\$8,590	\$8,990	\$9,190

Standard Heights 6'-16'

26x20	28x20	30x20
\$3,195	\$3,395	\$3,495
26x25	28x25	30x25
\$3,995	\$4,195	\$4,295
26x30	28x30	30x30
\$4,895	\$4,995	\$5,195
26x35	28x35	30x35
\$5,695	\$5,895	\$6,095

Standard Heights 6'-16'

26x20	28x20	30x20
\$3,095	\$3,195	\$3,395
26x25	28x25	30x25
\$3,895	\$3,995	\$4,195
26x30	28x30	30x30
\$4,695	\$4,895	\$4,995
26x35	28x35	30x35
\$5,495	\$5,695	\$5,895

☞ Roof Length is 1ft. Longer Than Frame Length

☞ 1 Year Workmanship Warranty (Limited)

☞ 10 Year Warranty on 14ga. 2 1/2" Framing

☞ 20 Year Limited Rust Through Warranty on:

- Panels for Vertical Roofs Up To Any Length
- Regular and Boxed Eaves Up To 31'
- Framing 12ga. 2 1/4"

15' - 16' Height Requires A Telescopic Forklift

All Buildings Include



29 Gauge Roofing



Anchors Included



Braces On Every Leg



Welded Center Truss And 4' Centers

All Units Standard With

- 6'-12' Single Leg, Single Base Rail.
- 13'-14' Single Leg, Single Base Rail, Reinforced.
- 15'-16' Double Leg, Double Base Rail.

Buildings Over 35 feet long must be vertical roof style

Land Must Be Level Prior To The Installation Of The Building!

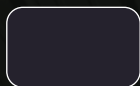
Available Colors :



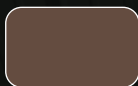
White



Clay



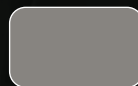
Black



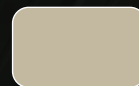
Earth Brown



Tan



Pewter Grey



Sandstone



Barn Red



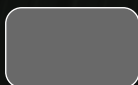
Pebble Begie



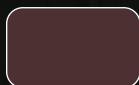
Slate Blue



Evergreen



Quaker Grey



Vintage Burgundy



King Blue

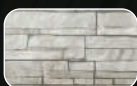


Cardinal Red

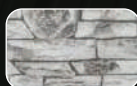


True Burgundy

Premium Colors :



Dark Stone



Light Rock



Copper

Please note that the colors may vary due to the printing process.



www.warriorbuildings.com



980-580-4899



info@warriorbuildings.com

QUALITY IS OUR FIRST PRIORITY



TRIPLE WIDE CERTIFIED 115/30

Options, Accessories And Extras

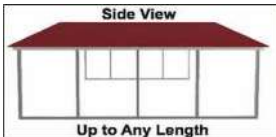
OPTIONS	20' LONG	25' LONG	30' LONG	35' LONG	40' LONG
12G 115/50	\$410	\$530	\$650	\$770	\$890
J-Trim	\$60	\$70	\$85	\$95	\$110

HEIGHT	20' LONG	25' LONG	30' LONG	35' LONG	40' LONG
7' Tall	\$110	\$130	\$155	\$180	\$205
8' Tall	\$215	\$265	\$310	\$360	\$410
9' Tall	\$325	\$395	\$470	\$540	\$610
10' Tall	\$430	\$530	\$625	\$720	\$815
11' Tall	\$540	\$660	\$780	\$900	\$1,020
12' Tall	\$840	\$995	\$1,140	\$1,295	\$1,440
13' Tall	\$1,190	\$1,370	\$1,775	\$1,955	\$2,245
14' Tall	\$1,295	\$1,500	\$1,930	\$2,135	\$2,450
15' Tall	\$1,920	\$2,280	\$2,640	\$3,120	\$3,600
16' Tall	\$2,160	\$2,520	\$2,880	\$3,360	\$3,840

Single Leg, Single Base Rail, Reinforced.

Double Leg, Double Base Rail.

HEIGHT	26' WIDE	28' WIDE	30' WIDE
6' Tall	\$1,250	\$1,390	\$1,530
7' Tall	\$1,350	\$1,500	\$1,645
8'-9' Tall	\$1,555	\$1,715	\$1,870
10' Tall	\$1,655	\$1,825	\$1,985
11'-12' Tall	\$1,860	\$2,040	\$2,215
13' Tall	\$1,960	\$2,150	\$2,330
14'-15' Tall	\$2,165	\$2,365	\$2,555
16' Tall	\$2,270	\$2,470	\$2,670
VERTICAL END (PER END)	\$450	\$510	\$570
VERTICAL TWO TONE (PER END)	\$450	\$500	\$550



UNCERTIFIED			CERTIFIED		
\$500	6' x 6'	\$750			
\$600	8' x 8'	\$800			
\$650	9' x 8'	\$850			
\$700	10' x 8'	\$950			
\$800	10' x 10'	\$1,050			
\$1,400	12' x 12'	\$1,900			
\$2,100	14' x 14'	\$2,500			
\$2,500	16' x 16'	\$2,700			

UNCERTIFIED			CERTIFIED		
\$600	6' x 6'	\$850			
\$700	8' x 8'	\$900			
\$750	9' x 8'	\$950			
\$800	10' x 8'	\$1,050			
\$900	10' x 10'	\$1,150			
\$1,500	12' x 12'	\$2,000			
\$2,200	14' x 14'	Coming Soon			
\$2,600	16' x 16'	Coming Soon			

White Only

Pewter Grey Evergreen
Earth Brown Barn Red
Pebble Begie

Building must be 2' taller than the garage door when installed on the side.

Chain Hoist Included In Price

HEIGHT	20' LONG	25' LONG	30' LONG	35' LONG	40' LONG
6' Tall	\$440	\$520	\$620	\$700	\$860
7' Tall	\$550	\$650	\$775	\$875	\$1,075
8'-9' Tall	\$660	\$780	\$930	\$1,050	\$1,290
10' Tall	\$770	\$910	\$1,085	\$1,225	\$1,505
11'-12' Tall	\$880	\$1,040	\$1,240	\$1,400	\$1,720
13' Tall	\$990	\$1,170	\$1,395	\$1,575	\$1,935
14'-15' Tall	\$1,100	\$1,300	\$1,550	\$1,750	\$2,150
16' Tall	\$1,210	\$1,430	\$1,705	\$1,925	\$2,365
VERTICAL SIDES (BOTH SIDES)	20' LONG	25' LONG	30' LONG	35' LONG	40' LONG
6'-10' Tall Add	\$360	\$420	\$480	\$540	\$600
11'-15' Tall Add	\$480	\$570	\$660	\$750	\$840
16' Tall Add	\$600	\$720	\$840	\$960	\$1,080
VERTICAL TWO TONE (BOTH SIDES)	\$300	\$350	\$400	\$450	\$500

Chain Hoist
\$325.00 Each

Frameouts	
45° Angle (Plus Frameout Charge)	\$85
Garage Door	\$150
Window	\$75
Walk-In Door	\$90

End Openings	
Without Garage Door	\$150

Insulation	
Double Bubble	\$1.50/sqft
Woven R-17	\$3.00/sqft



Gable End	
Certified	\$300
Vertical Gable Add	\$85

Colored Screws
Add 3% of Retail Cost of Building

Connection Fees	Side to Side	21' Long	Start at \$100
	Add \$25 For Each Additional 5' in Length		

Side Openings (With Garage Door)	
6'-10' Wide	\$150
12' Wide	\$200
14' Wide	\$250
16' Wide	\$300

Side Openings (Without Garage Door)	
6'-10' Wide	\$250
12' Wide	\$300
14' Wide	\$350
16' Wide	\$400
18' Wide	\$450
20' Wide	\$500

Windows	
<p>\$200</p> <p>30" x 30"</p> 	<p>\$225</p> <p>30" x 36"</p> 

1/2 Panel w/Trim	
21' Long	\$220
26' Long	\$260
31' Long	\$310
36' Long	\$350

Cut Panel	
21' Long	\$50
26' Long	\$60
31' Long	\$70
36' Long	\$80

Panels 3'	
21' Long	\$110
26' Long	\$130
31' Long	\$155
36' Long	\$175

Walk-In Doors
\$300 36" x 80"

For all Northern States.

Check your area for restrictions.

Prices subject to change without notice.



www.warriorbuildings.com



980-580-4899



info@warriorbuildings.com



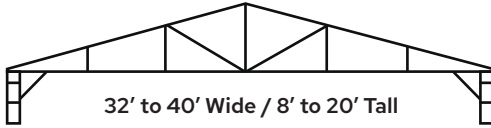
QUALITY IS OUR FIRST PRIORITY

COMMERCIAL CERTIFIED 115/30

32' to 60' Wide - Up To 20' Height - Any Length

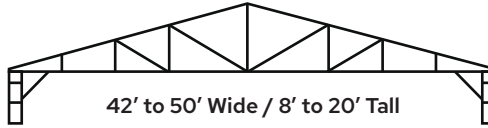
PRICES FOR TOP ONLY

CERTIFIED 4' CENTER OR LESS



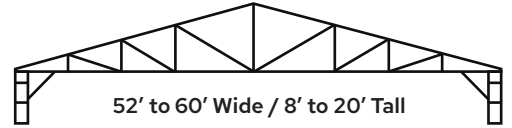
32' to 40' Wide / 8' to 20' Tall

CERTIFIED 4' CENTER OR LESS



42' to 50' Wide / 8' to 20' Tall

CERTIFIED 3'6" CENTER OR LESS



52' to 60' Wide / 8' to 20' Tall

32x20	34x20	36x20	38x20	40x20
\$7,295	\$7,695	\$8,195	\$8,595	\$9,195
32x24	34x24	36x24	38x24	40x24
\$8,595	\$8,995	\$9,495	\$9,995	\$10,595
32x28	34x28	36x28	38x28	40x28
\$9,795	\$10,295	\$10,795	\$11,295	\$11,895
32x32	34x32	36x32	38x32	40x32
\$11,095	\$11,595	\$12,095	\$12,595	\$13,195
32x36	34x36	36x36	38x36	40x36
\$12,395	\$12,995	\$13,395	\$13,895	\$14,495
32x40	34x40	36x40	38x40	40x40
\$13,595	\$14,295	\$14,795	\$15,195	\$15,795
32x44	34x44	36x44	38x44	40x44
\$14,895	\$15,595	\$16,095	\$16,595	\$17,195
32x48	34x48	36x48	38x48	40x48
\$16,095	\$16,895	\$17,395	\$17,895	\$18,495
32x52	34x52	36x52	38x52	40x52
\$17,395	\$18,195	\$18,695	\$19,195	\$19,795

42x20	44x20	46x20	48x20	50x20
\$9,595	\$10,095	\$10,695	\$11,295	\$11,995
42x24	44x24	46x24	48x24	50x24
\$10,895	\$11,395	\$11,995	\$12,695	\$13,395
42x28	44x28	46x28	48x28	50x28
\$12,195	\$12,695	\$13,295	\$13,995	\$14,795
42x32	44x32	46x32	48x32	50x32
\$13,595	\$13,995	\$14,595	\$15,395	\$16,095
42x36	44x36	46x36	48x36	50x36
\$14,895	\$15,395	\$15,995	\$16,795	\$17,495
42x40	44x40	46x40	48x40	50x40
\$16,195	\$16,695	\$17,295	\$18,195	\$18,895
42x44	44x44	46x44	48x44	50x44
\$17,495	\$17,995	\$18,595	\$19,595	\$20,295
42x48	44x48	46x48	48x48	50x48
\$18,795	\$19,295	\$19,895	\$20,895	\$21,695
42x52	44x52	46x52	48x52	50x52
\$20,195	\$20,595	\$21,195	\$22,295	\$22,995

52x20	54x20	56x20	58x20	60x20
\$12,495	\$13,295	\$13,995	\$14,795	\$15,495
52x24	54x24	56x24	58x24	60x24
\$13,895	\$14,695	\$15,395	\$16,095	\$16,895
52x28	54x28	56x28	58x28	60x28
\$15,195	\$16,095	\$16,795	\$17,495	\$18,195
52x32	54x32	56x32	58x32	60x32
\$16,595	\$17,495	\$18,195	\$18,895	\$19,595
52x36	54x36	56x36	58x36	60x36
\$17,995	\$18,795	\$19,595	\$20,295	\$20,995
52x40	54x40	56x40	58x40	60x40
\$19,395	\$20,195	\$20,895	\$21,695	\$22,395
52x44	54x44	56x44	58x44	60x44
\$20,795	\$21,595	\$22,295	\$22,995	\$23,795
52x48	54x48	56x48	58x48	60x48
\$22,095	\$22,995	\$23,695	\$24,395	\$25,095
52x52	54x52	56x52	58x52	60x52
\$23,495	\$24,395	\$25,095	\$25,795	\$26,495

Price Includes

- Vertical Siding Panels
- 1 Year Workmanship Warranty (Limited)
- 20 Year Warranty (See Website For More Info)
- 29 Gauge Roofing
- Cement Anchors
- Mobile Home Anchors (Ground)
- Welded Trusses
- Braces On Every Leg
- 14 Gauge Framing
- 4' Centers or Less



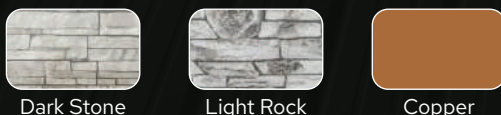
Price Note

- Customer must provide **TELESCOPIC FORKLIFT** during installation and must be able to reach 10' beyond the building height.
- Site inspection is required before installation.
- Colored screws are available.
- 26 Gauge metal upgrade available.
- Upgrade Available, 12G 115/50

Available Colors :



Premium Colors :



Please note that the colors may vary due to the printing process.



www.warriorbuildings.com



980-580-4899



info@warriorbuildings.com



QUALITY IS OUR FIRST PRIORITY

COMMERCIAL CERTIFIED 115/30

Options, Accessories And Extras

OPTIONS	20' LONG	24' LONG	28' LONG	32' LONG	36' LONG	40' LONG	44' LONG	48' LONG	52' LONG
12 G 115/50	\$840	\$960	\$1,080	\$1,200	\$1,320	\$1,440	\$1,560	\$1,680	\$1,800
Connection Fee Per Lean-To	\$300	\$325	\$350	\$375	\$400	\$425	\$450	\$475	\$500

HEIGHT	20' LONG	24' LONG	28' LONG	32' LONG	36' LONG	40' LONG	44' LONG	48' LONG	52' LONG
10' Tall	\$430	\$520	\$605	\$690	\$780	\$865	\$950	\$1,035	\$1,125
12' Tall	\$865	\$1,035	\$1,210	\$1,380	\$1,555	\$1,730	\$1,900	\$2,075	\$2,245
14' Tall	\$1,535	\$1,845	\$2,150	\$2,460	\$2,765	\$3,070	\$3,380	\$3,685	\$3,995
16' Tall	\$2,450	\$2,895	\$3,340	\$3,785	\$4,235	\$4,680	\$5,125	\$5,575	\$6,020
18' Tall	\$3,360	\$3,840	\$4,320	\$4,800	\$5,280	\$5,760	\$6,240	\$6,720	\$7,200
20' Tall	\$3,790	\$4,470	\$5,115	\$5,830	\$6,510	\$7,190	\$7,865	\$8,545	\$9,225

HEIGHT	20' LONG	24' LONG	28' LONG	32' LONG	36' LONG	40' LONG	44' LONG	48' LONG	52' LONG
8' Tall	\$1,030	\$1,235	\$1,440	\$1,645	\$1,850	\$2,050	\$2,255	\$2,460	\$2,665
10' Tall	\$1,175	\$1,405	\$1,630	\$1,870	\$2,100	\$2,350	\$2,580	\$2,810	\$3,035
12' Tall	\$1,320	\$1,585	\$1,850	\$2,110	\$2,375	\$2,640	\$2,905	\$3,170	\$3,430
14' Tall	\$1,465	\$1,755	\$2,050	\$2,340	\$2,635	\$2,930	\$3,220	\$3,515	\$3,805
16' Tall	\$2,040	\$2,450	\$2,855	\$3,265	\$3,670	\$4,080	\$4,490	\$4,895	\$5,305
18' Tall	\$2,470	\$2,970	\$3,460	\$3,955	\$4,450	\$4,945	\$5,440	\$5,935	\$6,425
20' Tall	\$2,905	\$3,485	\$4,065	\$4,645	\$5,225	\$5,810	\$6,390	\$6,970	\$7,550
Two Tone (Both Sides)	\$300	\$350	\$400	\$450	\$500	\$550	\$600	\$650	\$700

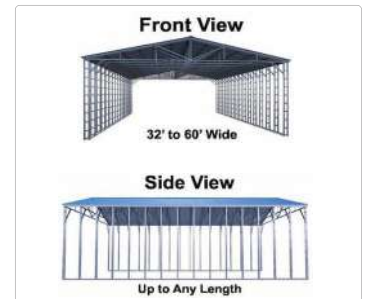
EACH END CLOSED	8' TALL	10' TALL	12' TALL	14' TALL	16' TALL	18' TALL	20' TALL	TWO TONE (PER END)
32' Wide	\$2,755	\$2,935	\$3,115	\$3,295	\$3,475	\$3,655	\$3,835	\$600
34' Wide	\$2,875	\$3,055	\$3,235	\$3,415	\$3,595	\$3,775	\$3,955	\$625
36' Wide	\$2,995	\$3,175	\$3,355	\$3,535	\$3,715	\$3,895	\$4,075	\$650
38' Wide	\$3,115	\$3,295	\$3,475	\$3,655	\$3,835	\$4,015	\$4,195	\$675
40' Wide	\$3,235	\$3,415	\$3,595	\$3,775	\$3,955	\$4,135	\$4,315	\$700
42' Wide	\$3,355	\$3,535	\$3,715	\$3,895	\$4,075	\$4,255	\$4,435	\$725
44' Wide	\$3,475	\$3,655	\$3,835	\$4,015	\$4,195	\$4,375	\$4,555	\$750
46' Wide	\$3,595	\$3,775	\$3,955	\$4,135	\$4,315	\$4,495	\$4,675	\$775
48' Wide	\$3,715	\$3,895	\$4,075	\$4,255	\$4,435	\$4,615	\$4,795	\$800
50' Wide	\$3,835	\$4,015	\$4,195	\$4,375	\$4,555	\$4,735	\$4,915	\$825
52' Wide	\$3,955	\$4,135	\$4,315	\$4,495	\$4,675	\$4,855	\$5,035	\$850
54' Wide	\$4,075	\$4,255	\$4,435	\$4,615	\$4,795	\$4,975	\$5,155	\$875
56' Wide	\$4,195	\$4,375	\$4,555	\$4,735	\$4,915	\$5,095	\$5,275	\$900
58' Wide	\$4,315	\$4,495	\$4,675	\$4,855	\$5,035	\$5,215	\$5,395	\$925
60' Wide	\$4,435	\$4,615	\$4,795	\$4,975	\$5,155	\$5,335	\$5,515	\$950

UNCERTIFIED		CERTIFIED
\$500	6' x 6'	\$750
\$600	8' x 8'	\$800
\$650	9' x 8'	\$850
\$700	10' x 8'	\$950
\$800	10' x 10'	\$1,050
\$1,400	12' x 12'	\$1,900
\$2,100	14' x 14'	\$2,500
\$2,500	16' x 16'	\$2,700
White Only		

UNCERTIFIED		CERTIFIED
\$600	6' x 6'	\$850
\$700	8' x 8'	\$900
\$750	9' x 8'	\$950
\$800	10' x 8'	\$1,050
\$900	10' x 10'	\$1,150
\$1,500	12' x 12'	\$2,000
\$2,200	14' x 14'	Coming Soon
\$2,600	16' x 16'	Coming Soon
<div> <div>Pewter Grey</div> <div>Earth Brown</div> <div>Pebble Begie</div> <div>Evergreen</div> <div>Barn Red</div> </div>		

Building must be 2' taller than the garage door when installed on the side.

☐ Chain Hoist Included In Price



Chain Hoist
\$325.00 Each

Frameouts	
45° Angle (Plus Frameout Charge)	\$85
Garage Door	\$150
Window	\$75
Walk-In Door	\$90

Insulation	
Double Bubble	\$1.50/sqft
Woven R-17	\$3.00/sqft

Blueprints
Call For Pricing : 980-580-4899

End Openings	
Without Garage Door	\$150

Side Openings Up To 16'	
With Garage Door	\$325
Without Garage Door	\$425

Gable End	
32' to 40' Wide	\$600
42' to 50' Wide	\$750
52' to 60' Wide	\$900

Colored Screws
Add 3% of Retail Cost of Building

Walk-In Doors
\$300 36" x 80"

Windows
\$200 30" x 30"
\$225 30" x 36"

For all Northern States.

Check your area for restrictions.

Prices subject to change without notice.



www.warriorbuildings.com



980-580-4899



info@warriorbuildings.com